



- Ref 0.12 - Rationalise and remove redundant signage throughout the town
- Ref 0.13 - Implement a development policy to encourage landowners to preserve and enhance elements contributing to the heritage streetscapes of Molong town centre
- Ref 0.14 - Continue to support community group initiatives and masterplans i.e. the Molong Recreation Ground, Hunter Caldwell and Showground Masterplans (commissioned by Molong Advancement Group)
- Ref 0.15 - Install seats every 200m along shared footpaths to improve accessibility options for the aged & others (annual allocation)
- Ref 0.16 - Commission Street Tree Masterplan to improve town presentation and provide shade
- Ref 0.17 - Install street trees (including ongoing watering and maintenance) in accordance with the Street Tree Masterplan
- Ref 0.18 - Review Council's tree planting details in streets, carparks and in natural ground to ensure optimal growing environment
- Ref 1.09 - Investigate origins of Queen Elizabeth Coronation planting and King George planting at western end of Bank Street and Interpret where appropriate
- Ref 0.20 - Install vehicle travel lane line marking to provide bicycle shoulders throughout the town centre
- Ref 0.19 - Prioritise footpath maintenance of the four city blocks and widen to 1500mm (Riddell, Edward and Mitchell Highway)
- Ref 0.21 - Install trees and understorey planting to main entrances of Molong from Wellington and Canberra in accordance with Street Tree Masterplan to define town entry
- Ref 0.23 - Develop a Council policy for those that excavate part of a footpath, be required to make good the paving from expansion joint to expansion joint to ensure uniform pavement is maintained
- Ref 1.10 - Investigate options for stone gutters to incorporate water filtration planting to improve appearance and environmental outcomes

- Ref 0.04 - Protect significant trees & remnant vegetation under the LEP Biodiversity provisions for significant vegetation
- Ref 0.01 - Update Cabonne Council's Management Plans and strategic policy to include outcomes from this town centre planning exercise
- Ref 0.02 - Develop a Council policy for commercial use of public open space to manage future risk and ensure equity
- Ref 0.03 - Ensure proposals protect the cultural landscape and heritage values of the Aboriginal and non-Aboriginal community
- Ref 0.05 - Provide mobile vendor facilities such as power outlets to support events and create flexible spaces
- Ref 0.06 - Review development located within the flood zone to ensure compliance with NSW Flood Prone Land Policy, Floodplain Development Manual and BCA
- Ref 0.07 - Provide accessible paths at compliant grades
- Ref 0.08 - Review Pedestrian Access and Mobility Plan (PAMP) and prioritise works that tie into town centre plan
- Ref 0.09 - Commission a town-wide Wayfinding and Interpretive Signage and Sculpture package to optimise active travel and tourism opportunities
- Ref 0.10 - Remove weeds with an ongoing eradication plan
- Ref 0.11 - Remove dead & under performing trees



Ref 1.01 - Install street trees to centre line of road with native understorey planting, permeable paving in between trees and safe crossing points near laneway as detailed

Ref 1.02 - Remove existing integrated planter and bench and make good

Ref 1.03 - Install tree planter pots with irrigation reservoir, ornamental tree planting and solar fairy lights in strategic positions along the main street as listed in the material palette

Ref 1.13 - Install bicycle parking street furniture listed in the material palette

Ref 1.06 - Replace existing bins with furniture listed in the material palette

Ref 1.07 - Remove existing hedges from pedestrian side of street blister garden beds and replant with planting for pedestrian enjoyment

Ref 1.12 - Install uplighting to trees in the main street for safety, night-time attraction and town presentation

Ref 3.03 - Render brick columns of Allen McMahon arbour to compliment heritage buildings

Ref 1.05 - Replace existing seats with furniture listed in the material palette

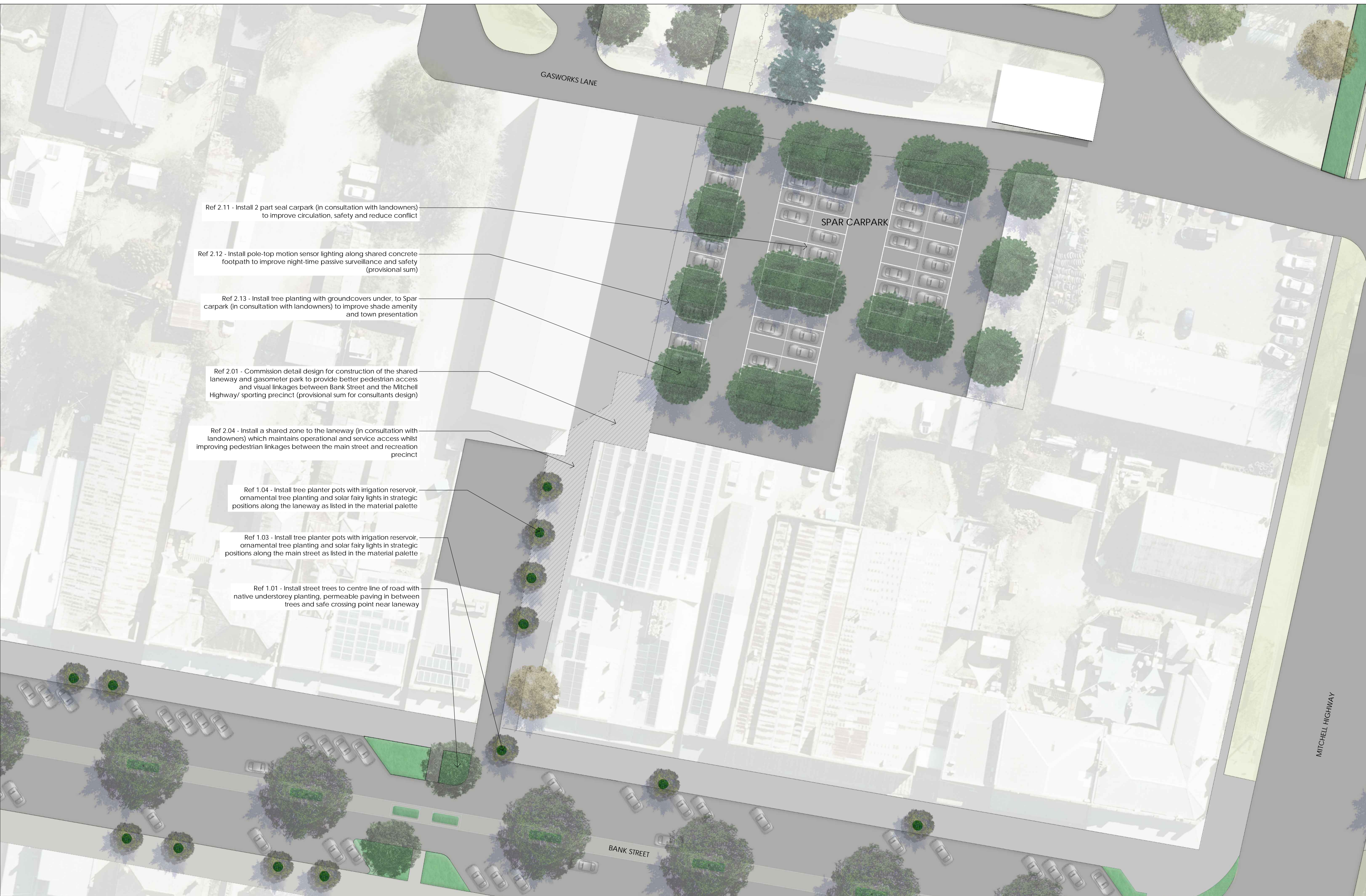
Ref 3.01 - Commission detail design of railway precinct to improve pedestrian and cycling linkages, formalise RV parking and to enhance the setting for the memorial fountain (provisional sum for consultants design & construction)

Ref 3.02 - Investigate grant opportunities to restore the memorial fountain and install interpretive signage

Ref 3.04 - Install street trees for shade and as succession planting

Ref 3.05 - Reinstate kerb and gutter outside Elders building to discourage parking on the footpath

Ref 1.12 - Install adjustable uplighting to trees in the main street for safety, night-time attraction and town presentation (provisional sum)



Ref 2.11 - Install 2 part seal carpark (in consultation with landowners) to improve circulation, safety and reduce conflict

Ref 2.12 - Install pole-top motion sensor lighting along shared concrete footpath to improve night-time passive surveillance and safety (provisional sum)

Ref 2.13 - Install tree planting with groundcovers under, to Spar carpark (in consultation with landowners) to improve shade amenity and town presentation

Ref 2.01 - Commission detail design for construction of the shared laneway and gasometer park to provide better pedestrian access and visual linkages between Bank Street and the Mitchell Highway/ sporting precinct (provisional sum for consultants design)

Ref 2.04 - Install a shared zone to the laneway (in consultation with landowners) which maintains operational and service access whilst improving pedestrian linkages between the main street and recreation precinct

Ref 1.04 - Install tree planter pots with irrigation reservoir, ornamental tree planting and solar fairy lights in strategic positions along the laneway as listed in the material palette

Ref 1.03 - Install tree planter pots with irrigation reservoir, ornamental tree planting and solar fairy lights in strategic positions along the main street as listed in the material palette

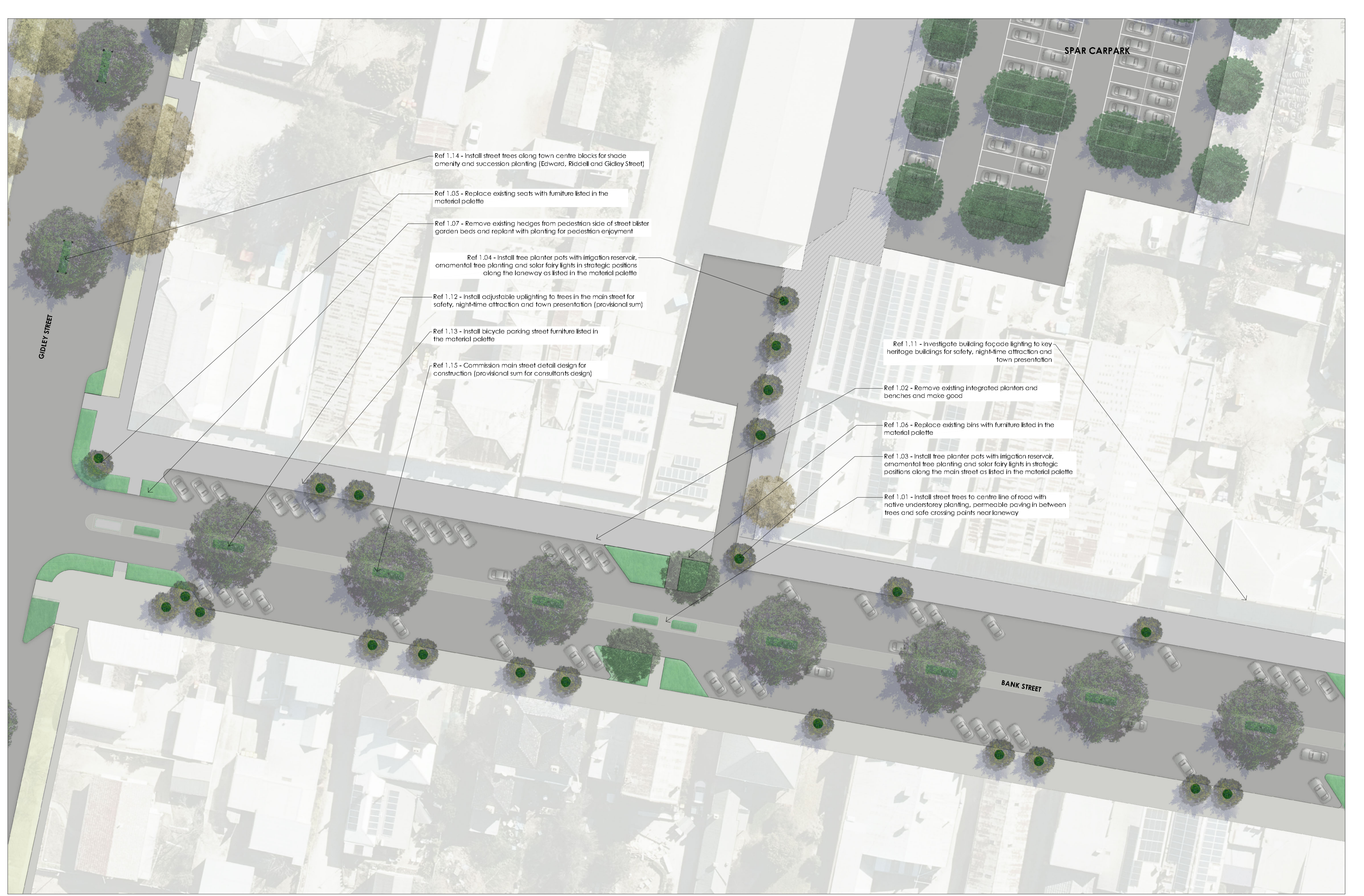
Ref 1.01 - Install street trees to centre line of road with native understorey planting, permeable paving in between trees and safe crossing point near laneway

SPAR CARPARK

MITCHELL HIGHWAY

BANK STREET

GASWORKS LANE



Ref 1.14 - Install street trees along town centre blocks for shade amenity and succession planting (Edward, Riddell and Gidley Street)

Ref 1.05 - Replace existing seats with furniture listed in the material palette

Ref 1.07 - Remove existing hedges from pedestrian side of street blister garden beds and replant with planting for pedestrian enjoyment

Ref 1.04 - Install tree planter pots with irrigation reservoir, ornamental tree planting and solar fairy lights in strategic positions along the laneway as listed in the material palette

Ref 1.12 - Install adjustable uplighting to trees in the main street for safety, night-time attraction and town presentation (provisional sum)

Ref 1.13 - Install bicycle parking street furniture listed in the material palette

Ref 1.15 - Commission main street detail design for construction (provisional sum for consultants design)

Ref 1.11 - Investigate building façade lighting to key heritage buildings for safety, night-time attraction and town presentation

Ref 1.02 - Remove existing integrated planters and benches and make good

Ref 1.06 - Replace existing bins with furniture listed in the material palette

Ref 1.03 - Install tree planter pots with irrigation reservoir, ornamental tree planting and solar fairy lights in strategic positions along the main street as listed in the material palette

Ref 1.01 - Install street trees to centre line of road with native understorey planting, permeable paving in between trees and safe crossing points near laneway

SPAR CARPARK

GIDLEY STREET

BANK STREET



Ref 1.15 - Commission main street detail design for construction (provisional sum for consultants design)

Ref 1.03 - Install tree planter pots with irrigation reservoir, ornamental tree planting and solar fairy lights in strategic positions along the main street as listed in the material palette

Ref 1.01 - Install street trees to centre line of road with native understorey planting, permeable paving in between trees and safe crossing points near Council Chambers/ Community Centre

Ref 1.05 - Replace existing seats with furniture listed in the material palette

Ref 1.06 - Replace existing bins with furniture listed in the material palette

Ref 1.08 - Commission a Landscape Masterplan for Molong Village Green to create a civic public square to increase amenity for community events and provide an all weather gathering space (includes community consultation, detail design & documentation)

Ref 1.16 - Install electric vehicle charging points adjacent Village Green to attract visitors to the main street

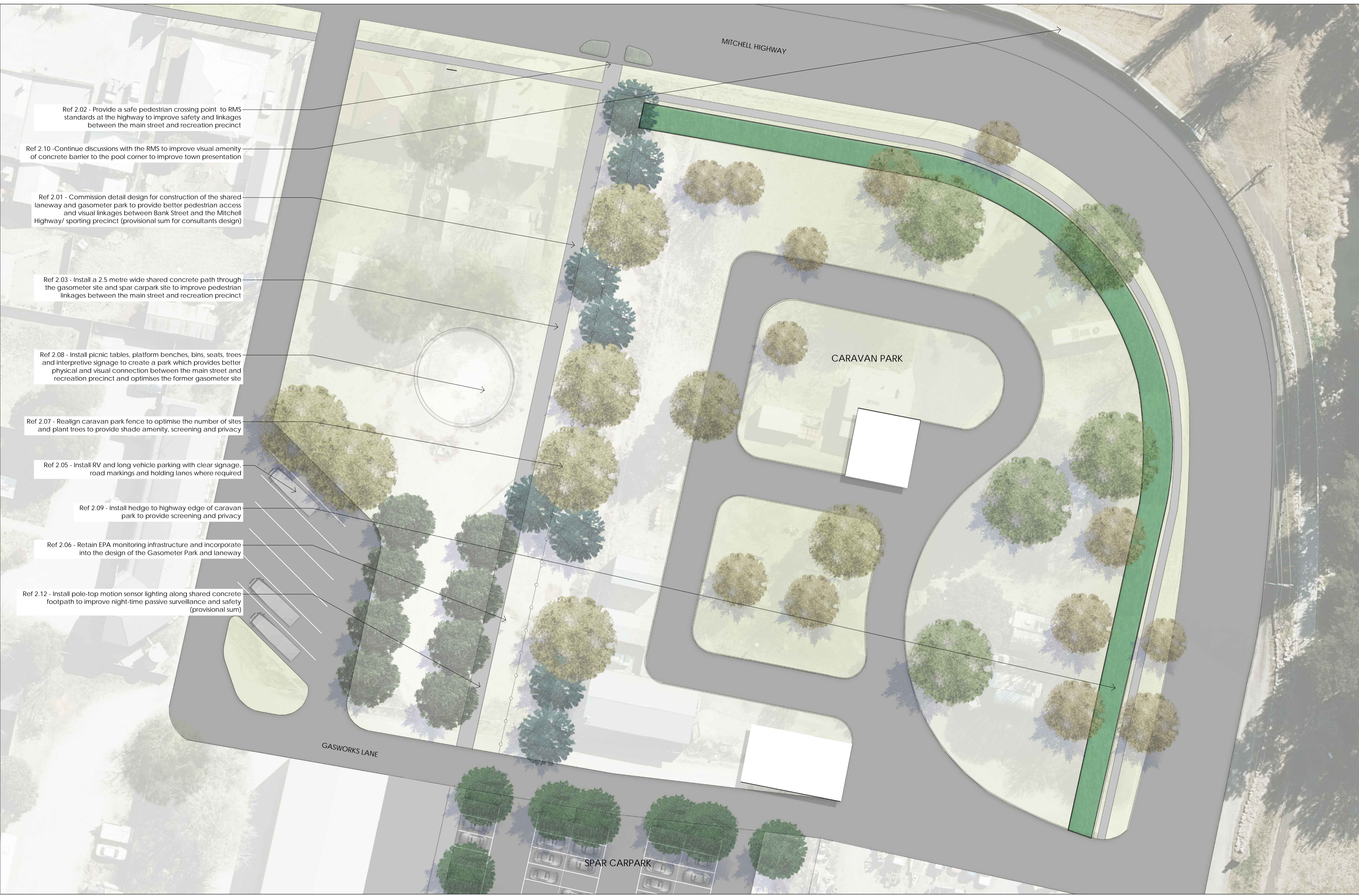
Ref 1.07 - Remove existing hedges from pedestrian side of street blister garden beds and replant with planting for pedestrian enjoyment

Ref 1.11 - Commission lighting design for the footpath and building facades to understand lighting objectives and cost for safety, night-time attraction and town presentation (provisional sum)

Ref 1.12 - Install adjustable uplighting to trees in the main street for safety, night-time attraction and town presentation (provisional sum)

Ref 1.13 - Install bicycle parking street furniture listed in the material palette

Ref 1.15 - Install street trees along town centre blocks for shade amenity and succession planting (Edward, Riddell and Gidley Street)



Ref 2.02 - Provide a safe pedestrian crossing point to RMS standards at the highway to improve safety and linkages between the main street and recreation precinct

Ref 2.10 - Continue discussions with the RMS to improve visual amenity of concrete barrier to the pool corner to improve town presentation

Ref 2.01 - Commission detail design for construction of the shared laneway and gasometer park to provide better pedestrian access and visual linkages between Bank Street and the Mitchell Highway/ sporting precinct (provisional sum for consultants design)

Ref 2.03 - Install a 2.5 metre wide shared concrete path through the gasometer site and spar carpark site to improve pedestrian linkages between the main street and recreation precinct

Ref 2.08 - Install picnic tables, platform benches, bins, seats, trees and interpretive signage to create a park which provides better physical and visual connection between the main street and recreation precinct and optimises the former gasometer site

Ref 2.07 - Realign caravan park fence to optimise the number of sites and plant trees to provide shade amenity, screening and privacy

Ref 2.05 - Install RV and long vehicle parking with clear signage, road markings and holding lanes where required

Ref 2.09 - Install hedge to highway edge of caravan park to provide screening and privacy

Ref 2.06 - Retain EPA monitoring infrastructure and incorporate into the design of the Gasometer Park and laneway

Ref 2.12 - Install pole-top motion sensor lighting along shared concrete footpath to improve night-time passive surveillance and safety (provisional sum)