

LEGEND:

- PROPOSED PIPELINE
- w — EXISTING WATER MAIN
- s — EXISTING SEWER MAIN
- sw — EXISTING STORMWATER

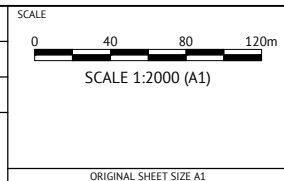
ISSUED FOR INFORMATION

DATE	REV	DESCRIPTION	AH REC	AW APP
24/02/2020	A	ISSUED FOR INFORMATION		



ORANGE OFFICE
 154 PEISLEY STREET
 ORANGE, NSW 2800
 PH: (02) 6393 5000
 WEB: www.premise.com.au

DESIGNED
 AH
 CHECKED
 AW
 PROJECT MANAGER
 MH
 ENGINEERING CERTIFICATION



CLIENT
CABONNE SHIRE COUNCIL

PROJECT
MOLONG BORES PROJECT

LOCATION
MOLONG, NSW 2866

SHEET TITLE
CONCEPT PIPELINE SITE PLAN

JOB CODE
220018_02

SHEET NUMBER
C002

REV
A