

Planning General Information & Support



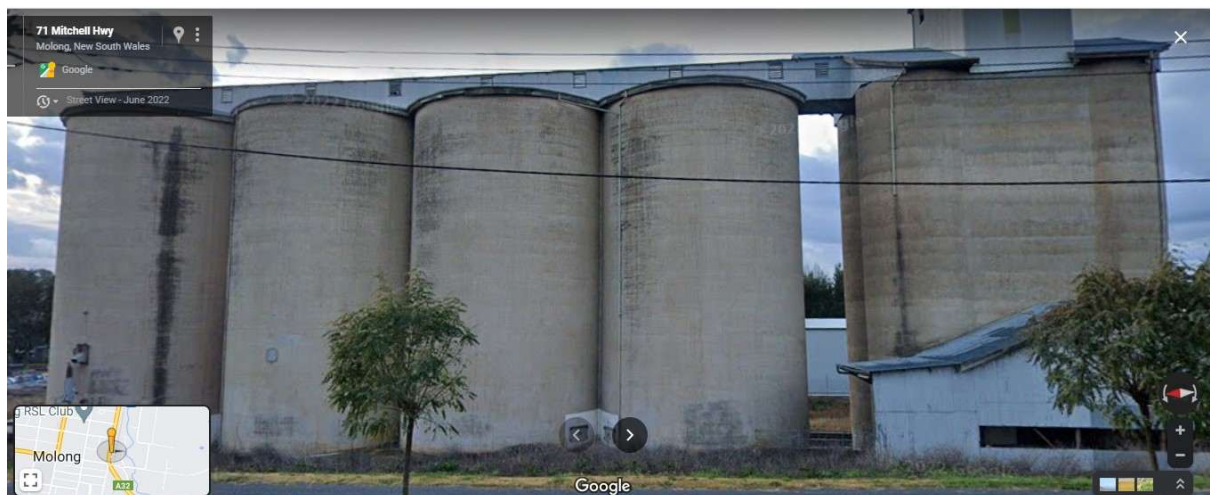
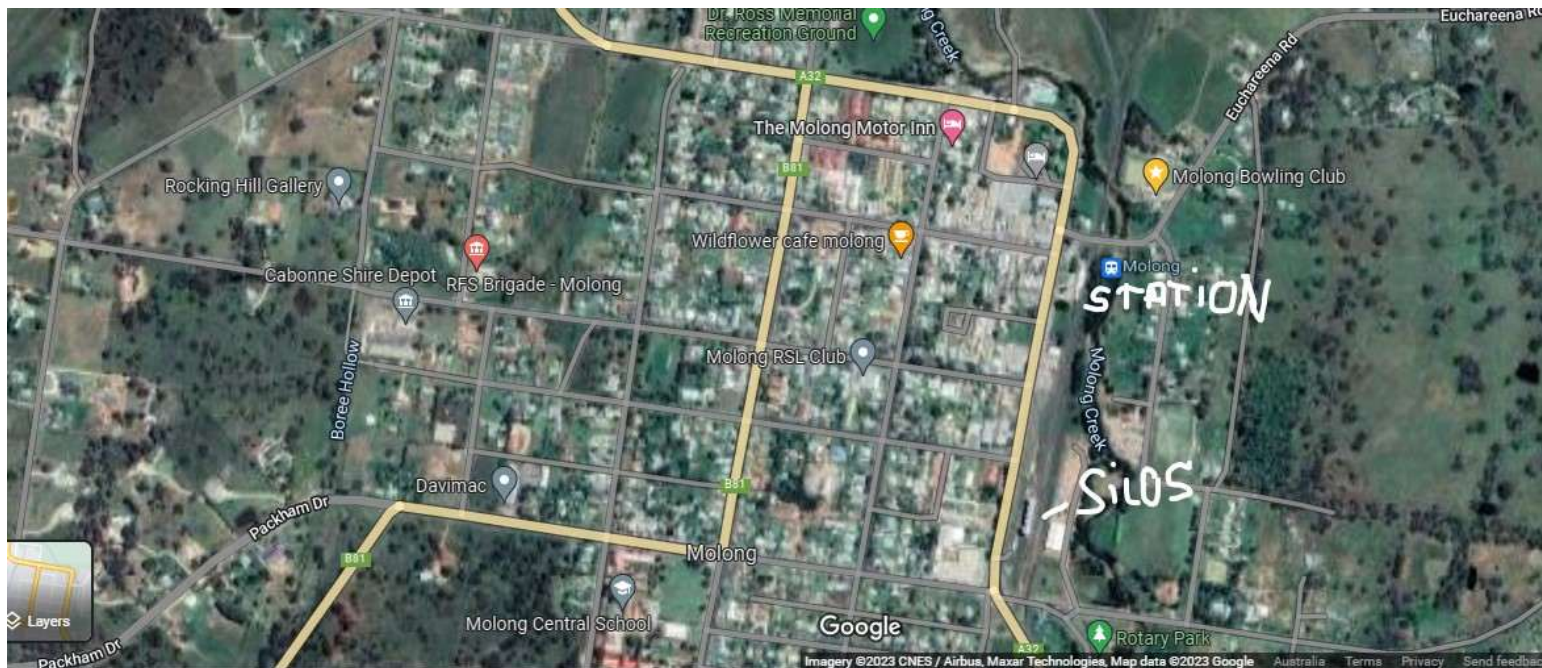
Overview

The GrainCorp silo at Molong is the largest and most eye-catching structure at the entrance to our rural town. It is also the first grain silo west of the Blue Mountains along the Mitchell Highway, being 30km west of Orange towards Wellington and Dubbo.

Molong has the prime advantage of its location at the junction of many roads and is about an hour drive to neighbouring towns and significant tourism venues, and the Gateway to the Central West. GrowMolong's formation of a Master Plan has the aim to make Molong THE tourist destination. GrowMolong members feel assured that we have already shown our capability to manage this project with the Stage 1 painting of the Water Tank.

To maximise and improve the visitor's experience, Molong needs a major attraction in the town. Painting a huge mural on the silos to tell "The Molong Story" will create this tourist focus. Developing a landscaped Culture and Heritage Walk to the silos from the Railway Station car park with displays of vintage machinery and incorporating local cultural history will complete the overall project.

GROWMOLONG



THE MOLONG STORY



MOLONG

Gateway to the Central West

MOLONG PERCHED ON THE EDGE OF THE CENTRAL TABLELANDS IS UNDERSTANDABLY THE GATEWAY TO THE CENTRAL WEST.

The Railway Water Tank was built to supply water to the steam train tenders. It was part of a network of dams and tanks that kept the goods trains moving throughout the area. The large concrete tank high on the hill above the railway held 200,000 gallons (900,000 litres) of water and was constructed in September 1926. The introduction of diesel trains led to the demise of the steam trains, and in July 1967, the Water Tank was decommissioned.

The Wiradjuri people called Molong "Place of Many Rocks" and traversed through the area and Molong became the meeting place for many of the First Nation People. These routes became important for the first settlers who were looking at moving out into the rural environment and establishing settlements and farms.

Sir Thomas Mitchell after whom the Mitchell Highway was named was appointed the NSW Surveyor General. In this role he conducted several explorations into the hinterland to map possible roads, rivers, and settlements. Mitchell's journals record the exploration trips and the 4th expedition in 1845 - 1846 to the Queensland Gulf country set off from "Boree Cabonne" homestead with a large party of 29 including settlers, 3 indigenous people, and stock. Mitchell engaged Yuranigh, a Wiradjuri man as his guide to help him explore the Western Region of NSW and Queensland, following the tracks used by the local indigenous people. Mitchell in his journal wrote of his guide, companion, counsellor, and friend that "his intelligence, and his judgement rendered him so necessary to me my confidence was never misplaced. He knew the character of the men in the party, nothing escaped his penetrating eye and quick ear". When the expedition returned, Yuranigh was injured and died in 1850, he was buried according to his traditional aboriginal customs, his grave is located 3kms SE of Molong, take the right turn from the Highway to Yuranigh Road.

Mitchell thought so much of his friend that he requested the NSW Governor to erect a Headstone with the following inscription.

"To Native Courage, Honesty and Fidelity, Yuranigh who accompanied the 4th expedition in 1846 lies buried here according to the rites of his countryman"

The picture of Mitchell was based on a Lithograph image by J. MacFarlane at Portland Bay.

The artwork displays the natural environment of the Molong area with local wattle flowers, and birds eg Eastern Rosella and the Australian Magpie which is the symbol for many Molong sporting teams. Other local birds featured are the Superb Fairy Wren, Eastern Spinebill, Galah, Cockatoo, Zebra Finch and

GrowMolong Incorporated Community Group sourced funding for this public artwork from the Foundation for Rural and Regional Renewal (FRRR). The indigenous artists were Michael Crook and Ricky Absee who interpreted "The Molong Story" and created this iconic colourful welcome for Molong.

'In the spirit of reconciliation GrowMolong acknowledges the Wiradjuri people, the Traditional Custodians of the country on which we meet and their connections to land, sea and community. We pay our respect to their Elders past and present and extend that respect to all Aboriginal and Torres Strait Islander peoples today.'







FRRR
Foundation for Rural
Regional Renewal



THE MOLONG WATER TANK ARTWORK WAS OPENED BY
MR ANDREW GEE MP FOR CALARE
ON THE 4TH DECEMBER 2021

The Molong Story is a staged project which will become an iconic tourist attraction for Molong.

Stage 1 – the Water Tank mural painting

Stage 2 – the Silos mural Painting

Stage 3 – the Railway development and parking precinct.

Community and first Nation Peoples consultation

From the start of planning for stage 1 GrowMolong members met with the Orange Local Aboriginal Lands Council to develop the proposal. We sought their advice on the use of First Nation images and concepts from the Wiradjuri culture. They recommended the artists for the water tank mural and also approved the design. The Stage 2 section was discussed in regard to the possible images to link the Stage 1 & 2 sites on each side of the highway to continue the Molong Story. The local community was approached at a Street Market and by surveys to develop the artistic design, showing the rich history and culture of this area.



Other Community consultations, eg meetings, teleconferences, emails and on-site visits

- Orange Local Aboriginal Land council
- GrainCorp Community Engagement Officer – Kyle Docherty
- Cabonne Council representatives and staff
- UGL – Third Party Works Manager - Karolyn Briggs

thirdpartyworks

25 May 2023, 08:15 (7 days ago)

to Affan, Yuvaraj, Amanda, Simon, me

Hi Les / Julie

Thank you for your time on Tuesday.

As discussed, as advised by your team no works will be carried out within our rail corridor but if any works are to be carried out within or above the green area (see attached) a third party application will need to be applied for.

UGLRL Property advised that a notification will be issued to the community when the rail station is available for lease, in the distant future.

We have requested our local maintenance team to carry out an inspection of the fence when they are in Molong next.

Please don't hesitate to give me a call if you have any questions.

Kind Regards,

Karolyn Briggs
Third Party Works Manager
Transport
UGL Regional Linx Pty. Ltd.

27-31 Griffin Avenue | Tamworth NSW 2340 | Australia
Mobile: 0427 339 852
Email: karolyn_briggs@uglregionallinx.com.au
Web: www.ugllimited.com



CABONNE COUNCIL
THE OFFICE OF THE MAYOR
POST OFFICE BOX 17
MOLONG 2866

Phone: 02 6392 3208
Fax: 02 6392 3260
Contact: Brad Byrnes

Website: www.cabonne.nsw.gov.au
Email: council@cabonne.nsw.gov.au

Doc ID: 1451083
Your Ref:
ABN: 41992 919 200

19 October 2022

Mrs Julie Dean
growMOLONG
PO Box 66
MOLONG 2866 NSW

Dear Julie

Council is pleased to provide this in principle letter of support of growMOLONG's efforts to secure grant funding for the Molong silo artwork project.

The GrainCorp silo, positioned on the Mitchell Highway entrance to town, is the first grain silo west of the Blue Mountains. There has been a growing interest across the state of adaptive re-use of these structures as an attraction for tourists and your group has been sympathetic to culture and heritage in the design concept.

I would like to commend the members of growMOLONG on their efforts to find ways to improve and enhance this existing structure for the benefit the wider community and wish you luck with securing funding for this project.

Yours faithfully

Clr Kevin Beatty
MAYOR



Grow Molong

Attn: Les & Julie Dean

01/06/2023

Re: Funding Opportunities

Dear Les and Julie,

I am delighted to confirm our conditional support for the GrainCorp silos in Molong, NSW to be painted with a permanent silo art mural; a community initiative currently being led by members of Grow Molong with the support of Cabonne Council.

This support is subject to a range of conditions being met, including but not limited to, the provision of a satisfactory traffic management plan, as well as the execution of an agreement between Grow Molong, GrainCorp and chosen artist(s).

Silo art murals are an outstanding example of public art that can add great value to a community, and this proposal stands to promote the Birchip community and enhance tourism opportunities for local businesses.

GrainCorp is supportive of the community's plans to seek funding and wish them all the best in these efforts.

Regards,

Kyle Docherty

A handwritten signature in black ink, appearing to read "kdocherty", written in a cursive style.

Community Engagement Manager
02 9266 9434

ABN 52 003 875 401

GrainCorp Operations Limited
Level 28, 175 Liverpool Street
Sydney NSW 2000 Australia
PO Box A268
Sydney South NSW 1235
T +61 2 9325 9100
F +61 2 9325 9180
graincorp.com.au

GrowMolong
PO Box 66
MOLONG
NSW 2866

Attn: Les & Julie Dean

12/04/2024

Re: GrowMolong - Regional Precincts and Partnerships Program - Stream One Precinct Development and Planning

Dear Les and Julie,

As owners of the silo precinct at 24 Watson Street (Mitchell Highway), Molong, NSW we appreciate all the information received in relation to your flood mitigation proposal.

GrainCorp is supportive of the groups plans to seek funding through the Regional Precincts and Partnerships Program - Stream One Precinct Development and Planning.

We wish you all the best with this application and opportunity to improve the flooding risks associated with the town of Molong.

Regards,

Kyle Docherty



Community Engagement Manager
0438 032 347